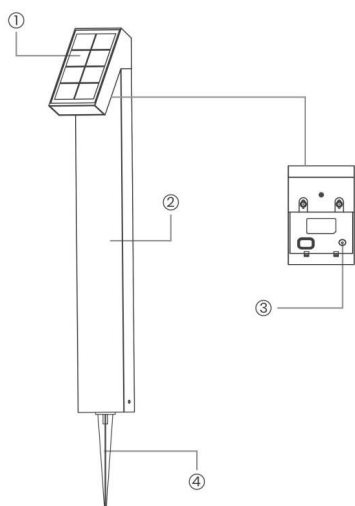




- Installation and wiring of luminaire must be in accordance with all applicable local codes.
- Installation, inspection, and maintenance of luminaires should be performed by a qualified electrician.
- **DO NOT** make or alter any open holes in the luminaire. Do not modify the luminaire.
- **DO NOT** install damaged product.
- Make sure electrical power is OFF before and during installation and maintenance.
- Make sure the equipment is properly grounded.
- Make sure the supply voltage is same as the rated fixture voltage.

## Main Parts



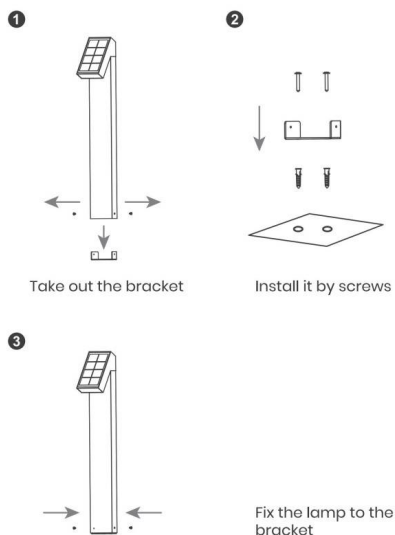
- ① Solar Panel
- ② Lamp Body
- ③ Switch Button
- ④ Stake

### Characteristics

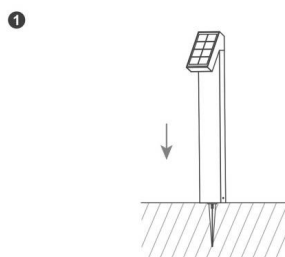
Battery: Li-ion Battery  
 Solar panel: Monocrystalline silicon  
 Materials: ABS+Aluminium Alloy

## How to install the device?

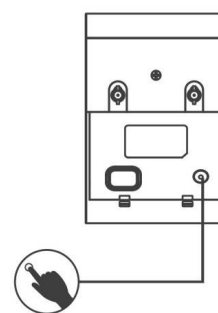
### Expansion Screw Install



### Ground Staking



## Working process instructions



### Switch Button

- 1. Switch on and off; long press for 1.5S
- 2. Short press to change the lighting mode

### Lighting Mode

- M1: 25% till dawn
- M2: 50% till dawn
- M3: 75% till dawn
- M4: 100% till dawn